

9 WAYS TO WASTE MONEY ON OFFICE PRINTING

1. Failure To Adopt A Print Naming Convention



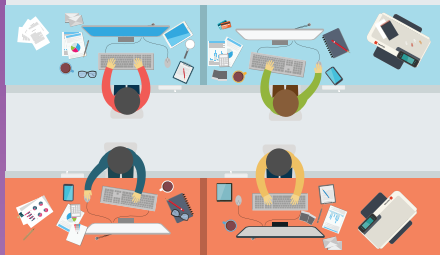
Numerous preceding system administrators with different methodologies have resulted in a series of non-strategic software and hardware purchases. Various print devices are scattered among departments, only tentatively linked.

2. Never Establish A Print Management Strategy



There's no foundation to implement best practices. Simple tasks like scanning hard-copy documents back to PC's or back-end archives remain bewildering or unreliable.

3. Permit Rogue Printers



A high percentage of personal printers has been allowed. Users have moved wires and devices without putting them back correctly. Your ad hoc network is notoriously difficult to administrate.

4. Don't Track Print Activity



90% of businesses do not track their printing costs. The cost-per-page can be very high — and currently there are few ways at your disposal to prevent bad print behaviors.

5. Fail To Set or Enforce Print Security Policies



Device security policies are difficult to apply, enforce, or strengthen. Confidential customer data and valuable proprietary intelligence are highly vulnerable. Catastrophic security breaches become a real possibility.

6. Neglect Mobile Print & Scan Access



Growing trend of BYOD remains unaddressed, resulting in a less-competitive business. High-level staff waste precious work time to dealing with inability to securely print or scan via WiFi.

7. Allow Departments to Source Supplies Outside Contracts



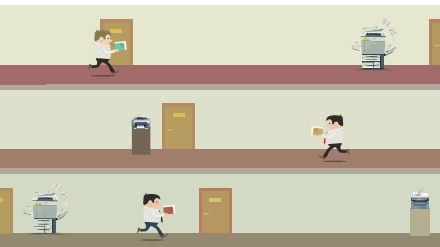
Supply expenses are unpredictable, ad-hoc, and not accurately reported. Numerous and various network print drivers aren't updated as needed.

8. Isolate Print from Office Workflow



Higher-level efficiencies like intelligent document workflow and Cloud Service integration aren't a realistic option. No improvement is taken until a high-level executive can't accomplish a certain print- or document-related task.

9. Allow IT Administrators to Address Print Problems



Nearly 50% of help desk calls are printer related. High hourly-rate IT Administrators are pulled off important projects. Unanticipated time is spent constantly addressing various print issues each day.

Print IT Infrastructure Management Services

Unfortunately, print infrastructure is often a low priority for IT. Because challenges arise without warning, support requests must be addressed on an ad hoc basis.

Print IT Infrastructure Management Services from Canon Information & Imaging Solutions enable your internal IT resources more time to focus on mission critical projects, increase the efficiency for your IT and print infrastructure users, and help improve your ROI.

Our certified specialists will configure, manage, and monitor your print servers and drivers so you can focus on higher level initiatives.

Canon

CANON INFORMATION & IMAGING SOLUTIONS

Optimize Your Print Technologies

Why operate from one print crisis to the next? To leverage Canon's unique expertise in Print IT Management, contact us today at [info@ciis.canon.com].

www.ciis.canon.com